



KONICA MINOLTA

The essentials of imaging



OFFERING
THE SKILLS
TO WIN

bizhub C552 and bizhub C652

Simply convincing

Office systems bizhub C552 an bizhub C652



Convincing values inside and out

To stay ahead, large workgroups and busy departments as well as CRDs continuously need to upgrade and enhance their document production and communication facilities. For that purpose Konica Minolta's colour multifunctionals bizhub C552 and bizhub C652 combine advanced technology, amazing versatility and absolute reliability with an attractive, futuristic InfoLine design – featuring all the attributes essential to their targeted user group:

- A convincing performance is the key to productivity – and the bizhub C552/C652 boast an array of high-performance features:
 - Their 1 GHz CPU provides a truly amazing processing speed and guarantees impressive computing power.
 - With 2 GB of DDR2 memory, both systems are generously equipped with the fastest and most innovative memory presently available.
 - With a 250 GB S-ATA2 HDD, bizhub C552/C652 feature a sizable and ultra-fast hard disc.
 - In addition, their PCI Express represents latest PCI bus technology for extra speed enhancement and further improved performance.

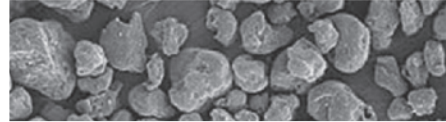
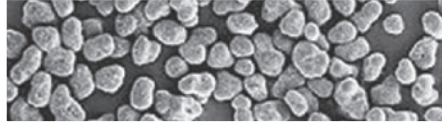
- A convincing design turns any equipment into the highlight of the corporate office or print room. The bizhub C552/C652's futuristic InfoLine design does more than that – its intuitive operation considerably improves user convenience and operability.
- The bizhub C552 and bizhub C652 convince with Konica Minolta's "skills to win": they combine comprehensive communication capabilities in a single device, feature latest technology and advanced software applications, provide above-their-class colour and b/w quality and are entirely eco-friendly.

→ Workflow options



Simitri® HD polymerised toner

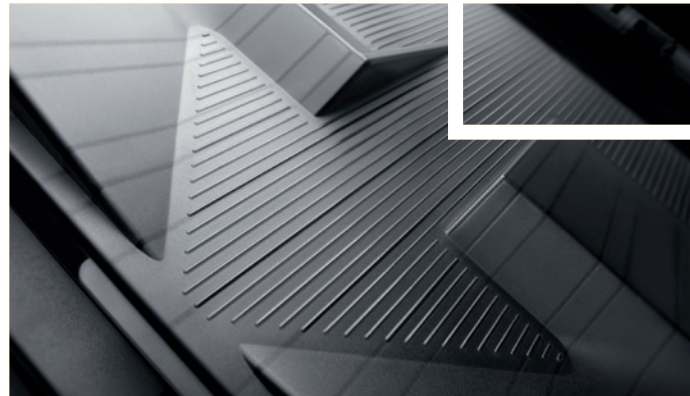
Conventional toner



Technology & quality, absolutely convincing

→ Advanced Emperon™ controller

The Emperon™ controller technology proprietary to Konica Minolta is an integral part of the bizhub C552/C652's overall system architecture and ensures seamless integration into any standard network environment. It supports PDF 1.7, and with enhanced PostScript compatibility features numerous quality enhancements, including auto-trapping and black overprint. Ease of operation has also been improved with the introduction of a customised printer driver tab: under MyTab users can individually combine their frequently used features enabling them to make all settings in a single screen.



→ Unique Simitri® HD toner

With tiny and uniformly shaped toner particles Konica Minolta's proprietary Simitri® HD toner achieves an image quality second to none. Razor-sharp text and lines, colours that don't fade, and a smooth and highly durable print finish ensure longer-lasting prints of better quality than ever.

→ Impressive eco-performance

Complying with the regulations of the Energy Star, German Blue Angel, WEEE* and RoHs**, the bizhub C552/C652 impress with the lowest energy consumption values yet achieved in products of their class. This is largely due to the state-of-the-art fusing technology adopted by Konica Minolta: The use of Simitri® HD polymerised toner enables fixing at lower temperatures, for which induction heating provides a safe and instantaneous source of heat. This minimises the warm-up period to a revolutionary 45 seconds while maximising energy efficiency at the same time.

→ Configurations



→ PageScope Enterprise Suite

This efficient software suite gives administrators a full monitoring and management application that provides complete access to all user- and device-related information from a central server platform. Four individual software modules govern the performance, cost control, and rights administration for all registered users and connected output devices.

→ CS Remote Care monitoring

Pro-active and highly flexible service support is available with CS Remote Care. Konica Minolta's remote monitoring application helps to keep the bizhub C552/C652 running smoothly, minimising interruptions and maximising system availability. All relevant system data are transmitted directly to the Konica Minolta service in an automated process that never needs user intervention.

bizhub C552 

bizhub C652 



Complete multifunctionality, convincing versatility

bizhub C552 and bizhub C652 impress with comprehensive communication capabilities – whether they print, copy, fax, scan or are used to directly access the Internet or Intranet.

→ User convenience and operability

The bizhub C552/C652's large full-colour touch-screen display can be tilted and turned to guarantee excellent visibility from any angle. Enhanced colour preview and thumbnail features allow checking exactly what the printed document will look like, avoiding mistakes before production. The logical screen layout, animated help and guidance features as well as an optional hardware keyboard further support the simple and straightforward operation.

→ Powerful multifunctionality

The bizhub C552/C652's advanced print functionality focuses on the fully automatic production of professional documents. In colour as much as in black and white, both systems are highly productive, economical and always available for printing and copying.

Similarly efficient as scanners, bizhub C552 and C652 streamline the distribution and sharing of information. With impressive 78 opm they offer high-speed scanning to eMail, FTP, SMB and user box plus the newly added scan-to-USB/mobile box.

The choice of scan formats includes multi-page PDF, XPS and TIFF. Available in combination with user authentication, the functions scan-to-Me and scan-to-Home serve to speed up the process of sending scans to the user's own E-Mail address (scan-to-Me) or own registered PC folder (scan-to-Home). The administrator can take advantage of these features to restrict the choice of scan destinations to a user's own destinations.

To any location requiring fax communication, the bizhub C552/C652 offer generous digital and analogue fax capabilities, newly including Internet Fax and IP (Intranet) Fax in colour. Various security features make confidential fax communication reliably safe.

→ Enhanced user box functionality

Konica Minolta's unique User Box approach makes the storing and managing of information on the system's internal hard disc truly efficient, facilitating for example the sharing of scanned, printed, copied and faxed documents. Up to 1,000 user boxes can be set up with flexible access rights and boxes defined as public, for group use or private.



→ i-Option

Streamlining user operation and increasing convenience, i-Option makes available clever software enhancements to extend the communication capabilities of the bizhub C552/C652 and enable safe communication with PDFs. The i-Option Web Browser provides direct panel access to Internet pages and data on the Intranet. It makes browsing the web from the MFP's control panel just as convenient as direct printing of web pages. Digital ID encryption and digital signature protect PDF files against tampering and improper use. And the possibility to attach metadata such as keywords to PDFs facilitates the Intranet search of archived documents.

→ Impressive security standards

Beyond Konica Minolta's comprehensive standard security functionality, the bizhub C552/C652 include advanced features and offer enhanced functionality. With client authentication via IEEE 802.1x, bizhub C652/C552 can be connected to secure networks. Safe network communication from and to these devices is ensured by encryption with the IPsec protocol. The standard HDD encryption kit protects all data on the hard disc against unauthorised use. Authentication via optional finger vein scanner or non-contact ID card limits system access to authorised users and has been improved in convenience and usability. With such comprehensive security functionality, naturally bizhub C552 and bizhub C652 both have the ISO 15408 EAL3 certification.



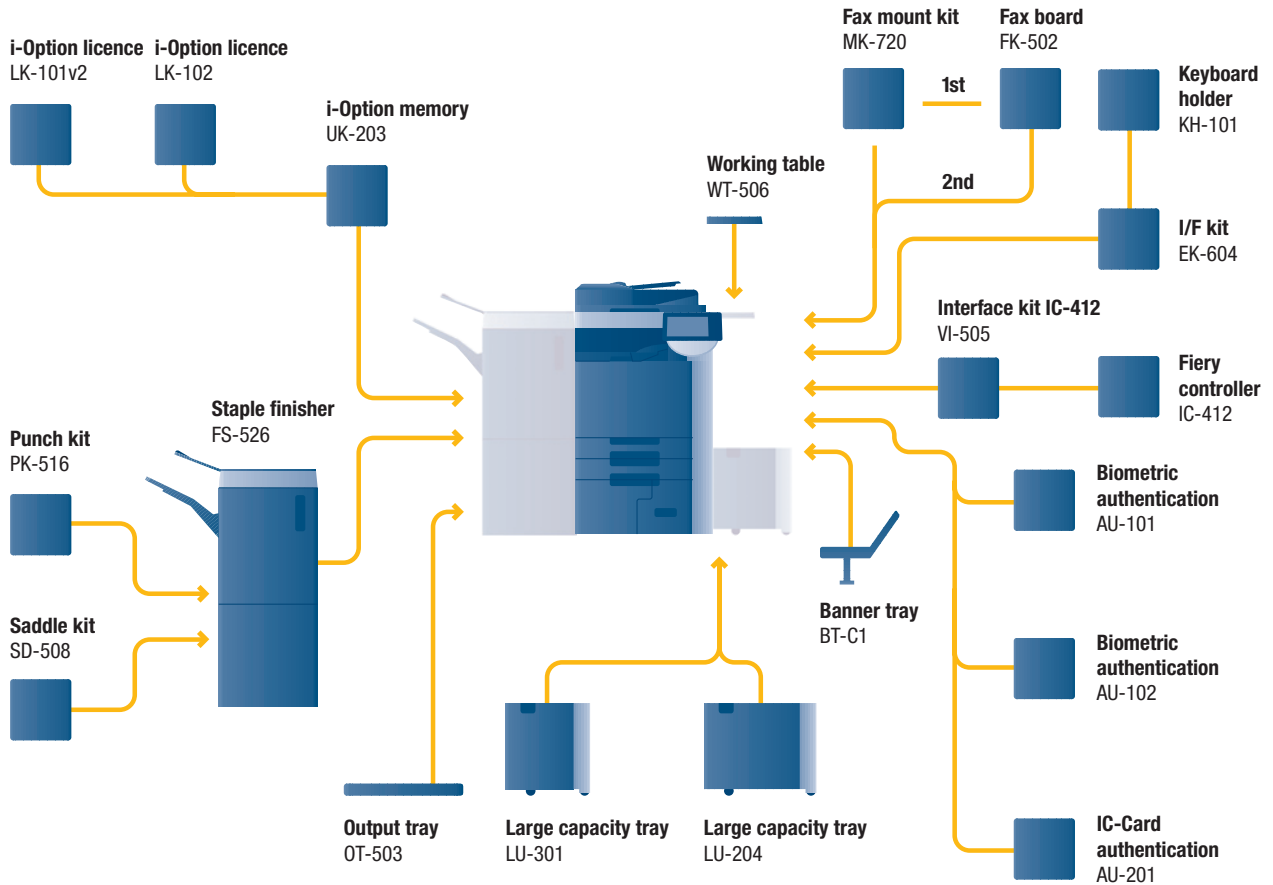
→ Comprehensive media and finishing capabilities

Media processing on the bizhub C552 and bizhub C652 is impressively flexible: Their generous paper supply of up to 6,650 sheets is sufficient to complete even high-volume jobs without interruption. Paper sizes range from A6 to A3+, and paper qualities include thick paper of up to 300 gsm. Special media are processed without hitch, same as customised sizes, including banner printing on individual sheets of up to 1.2 metres length.

A highlight among the bizhub C552/C652's versatile finishing options is the endless booklet production in the booklet finisher. This also has a letter-fold functionality, equally with unlimited capacity and perfect for the time-saving automatic folding of invoices, mailings and other letters. Finishing further includes automatic stapling of up to 100 sheets, 2- and 4-hole punching for professional manuals, reports and extensive documentation; and the insertion of heavy covers of up to 200 gsm.



➔ Option diagram & descriptions



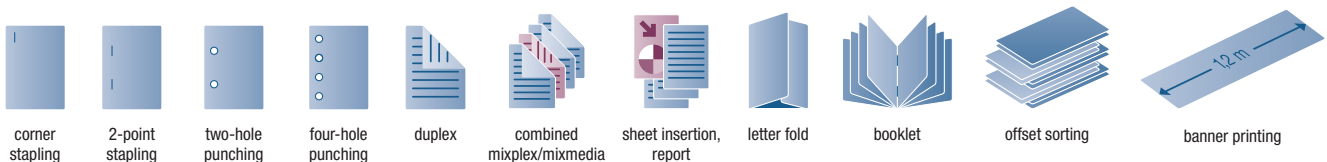
bizhub C552/C652 Basic system

Communication centers with 65/55 ppm b/w and 50/45 ppm colour. Standard Emperon™ print controller with PCL 6c, PostScript 3, PDF 1.7 and XPS support. Paper capacity of 500 + 500 + 1,000 + 1,500 sheets and 150 sheets manual bypass. Media from A6 to A3+, 1.2 m banner and 64–300 gsm. 2 GB memory, 250 GB hard disc and 1 GB Ethernet standard.

FS-526 Staple finisher	100 sheet stapling, output capacity 3,100 sheets
PK-516 Punch kit	2/4 hole punching
SD-508 Saddle kit	Booklet finishing, letter-folding
OT-503 Output tray	Output tray used instead of finisher
LU-301 Large capacity tray	A4, 3,000 sheets, 64–256 gsm
LU-204 Large capacity tray	A4–A3+, 2,500 sheets, 64–256 gsm
BT-C1 Banner tray	Multipage banner printing
VI-505 Interface kit	Fiery controller interface card

IC-412 Fiery controller	Professional colour print controller
AU-101 Biometric authentication	Finger vein scanner
AU-102 Biometric authentication	Finger vein scanner
AU-201 IC-Card authentication	IC-Card scanner
KH-101 Keyboard holder	To place the USB keyboard
EK-604 I/F kit	USB keyboard connection
MK-720 Fax mount kit	I/F board for fax FK-502
FK-502 Fax board	Super G3 fax
WT-506 Working table	Authentication device placement
LK-101v2 i-Option licence	Webbrower, Image panel
LK-102 i-Option licence	PDF enhancement
UK-203 i-Option memory	Memory extension for i-Option

➔ Finishing options



corner stapling

2-point stapling

two-hole punching

four-hole punching

duplex

combined mixplex/mixmedia

sheet insertion, report

letter fold

booklet

offset sorting

banner printing

→ Technical specifications

■ Copier specifications

Copying process	Electrostatic laser copy; Tandem; indirect
Toner system	Simitri HD®- polymerised toner
Copy/print speed A4 (mono/colour)	Up to 55/45 cpm (bizhub C552) Up to 65/50 cpm (bizhub C652)
Copy/print speed A3 (mono/colour)	Up to 28/23 cpm (bizhub C552) Up to 33/25 cpm (bizhub C652)
Autoduplex speed A4 (mono/colour)	Up to 55/45 cpm (bizhub C552) Up to 65/50 cpm (bizhub C652)
1st Copy/print time (mono/colour)	4.3/6.0 sec. (bizhub C552) 3.8/5.5 sec. (bizhub C652)
Warm-up time	Approx. 45 sec. ¹
Copy resolution	600 x 600 dpi
Gradation	256 gradations
Multi-copy	1–9,999
Original format	A5–A3
Magnification	25–400% in 0.1% steps; Autozooming
Copy functions	Chapter; Cover and page insertion; Proof copy (print and screen); Adjustment test print; Digital art functions; Job setting memory; Poster Mode; Image repeat; Overlay; Stamping; Copy Protection

■ Printer specifications

Print resolution	Equivalent to 1,800 x 600 dpi
Controller CPU	PowerPC MC7448 @ 1 GHz; 64 BIT
Page description language	PCL 6c (PCL 5c + XL3.0); PostScript 3 (CPSI 3017); XPS
Operating systems	Windows 2000/XP/XP64 Windows VISTA 32/64 DPWS support Server 2000/2003/2003x64/2008/2008x64 Macintosh 9.x/10.x Unix/Linux/Citrix
Printer fonts	80x PCL Latin; 137x PostScript 3 Emulation Latin
Print functions	Direct print of PCL; PS; TIFF; XPS; PDF and Encrypted PDF files Mixmedia and mixplex; Job programming "Easy Set"; Overlay; Watermark; Copy Protection

■ Scanner specifications

Scan speed	Colour up to 78 opm (300 dpi via DF) Mono up to 78 opm (300 dpi via DF)
Scan resolution	Max.: 600 x 600 dpi
Scan modes	Network TWAIN scan; scan-to-eMail (scan-to-Me); scan-to-FTP; Scan-to-SMB (scan-to-Home); scan-to-Box; scan-to-WebDAV; scan-to-DPWS; scan-to-USB
File formats	JPEG; TIFF; PDF; Compact PDF; Encrypted PDF; XPS; Compact XPS
Scan destinations	2,100 (single + group); LDAP support
Scan functions	Annotation (text/time/date) for PDF; up to 400 job programs

■ Fax specifications

Fax standard	Super G3 (optional)
Fax transmission	Analogue; i-Fax; Colour i-Fax (RFC3949-C); IP-Fax; SIP-Fax
Fax resolution	Max.: 600 x 600 dpi (ultra-fine)
Fax compression	MH; MR; MMR; JBIG
Fax modem	Up to 33.6 Kbps
Fax destinations	2,100 (single + group)
Fax functions	Polling; Time shift; PC-Fax; Receipt to confidential box; Receipt to eMail/FTP/SMB; up to 400 job programs

■ User box specification

Max. user boxes	Up to 3,000
Max. storable documents	Up to 3,000 documents or 10,000 pages
Type of user boxes	Public; personal (with password or authentication); group (with authentication)
Type of system boxes	Secure print; encrypted PDF print; fax receiving; fax polling
User box functionality	Reprint; combination; download; sending (email/FTP/SMB and Fax); copy box to box

■ System Specifications

System memory	2,048 MB
System hard disc	250 GB
Interface	10-Base-T/100-Base-T/1,000-Base-T Ethernet; USB 2.0
Network protocols	TCP/IP (IPv4 / IPv6); IPX/SPX; NetBEUI; AppleTalk (EtherTalk); SMB; LPD; IPP; SNMP; HTTP
Frame types	Ethernet 802.2; Ethernet 802.3; Ethernet II; Ethernet SNAP
Automatic document feeder	Up to 100 originals; A6–A3; 35–210 gsm
Printable paper size	A6–A3 full bleed; customised paper sizes; banner paper max. 1,200 x 297 mm
Printable paper weight	64–300 gsm
Paper input capacity	Standard: 3,650 sheets Max.: 6,650 sheets
Tray 1 + 2	500 sheets; A5–A3+; 64–256 gsm
Tray 3	1,500 sheets; A4; 64–256 gsm
Tray 4	1,000 sheets; A4; 64–256 gsm
Manual Bypass	150 sheets; A6–A3+; custom sizes; banner 64–300 gsm
Large Capacity Cabinet (optional)	3,000 sheets; A4; 64–256 gsm
Large Capacity Cabinet (optional)	2,500 sheets; A4–A3+; 64–256 gsm
Automatic duplexing	A5–A3+; 64–256 gsm
Finishing modes (optional)	Offset; group; sort; staple; punch; centre-fold; letter-fold; booklet
Output capacity (w. finisher)	Max.: 3,100 sheets
Output capacity (w/o finisher)	Max.: 250 sheets
Stapling	100 sheets or 98 sheets + 2 cover sheets (up to 209 gsm)
Stapling output capacity	Max. 1,000 sheets
Letterfold	Up to 3 sheets
Letterfold capacity	20 sheets (tray); unlimited
Booklet	20 sheets or 19 sheets + 1 cover sheet (up to 209 gsm)
Booklet output capacity	100 sheets (tray); unlimited
Copy/print volume (monthly)	Rec.: 80,000; Max.: 200,000 (bizhub C552) Rec.: 100,000; Max.: 250,000 (bizhub C652)
Toner lifetime	Black 45,000; CMY 30,000
Imaging unit lifetime	Black 285,000/1,140,000 (Drum/Developer) CMY 120,000 (bizhub C552) CMY 135,000 (bizhub C652)
Power consumption	220-240 V / 50/60Hz Less than 2.0 KW (bizhub C552) Less than 2.1 KW (bizhub C652)
System dimensions (W x D x H, mm)	650 x 879 x 1155
System weight	Approx. 221 kg

■ System features

Security	ISO 15408 EAL3 (in evaluation); IP filtering and port blocking; SSL2; SSL3 and TSL1.0 network communication; IPsec support; IEEE 802.1x support; user authentication; authentication log; Secure Print; Hard disc overwrite (8 standard types); Hard disc data encryption (AES 256); Memory data auto deletion; Confidential fax receiving; Print user data encryption
Accounting	Up to 1,000 user accounts Active Directory support (user name + password + email + smb folder); User function access definition; Biometric Authentication (finger vein) optional; IC-Card authentication (IC-Card reader) optional
Software	PageScope Net Care Device Manager; PageScope Data Administrator; PageScope Box Operator; PageScope Workware (Trial); PageScope Direct Print; Print Status Notifier; Driver Packaging Utility; Log Management Utility

¹ Warm up time may vary depending on the operating environment and usage



KONICA MINOLTA

Simitri HD
High Definition Polymerised Toner



CITRIX



*WEEE = EU Directive on Waste and Electrical Equipment

**RoHS = Restriction of Hazardous Substances Directive

- All specifications relating to paper capacity refer to A4-size paper of 80 gsm quality.
- All specifications relating to scanning, copying or printing speeds refer to A4-size paper that is scanned, copied or printed crosswise in multipage, simplex mode.
- The support and availability of the listed specifications and functionalities varies depending on operating systems, applications, network protocols as well as network and system configurations.
- The stated life expectancy of each consumable is based on specific operating conditions such as page coverage for a particular page size (5 % coverage of A4). The actual consumables life will vary depending on the use and other printing variables including page coverage, page size, media type, continuous or intermittent printing, ambient temperature and humidity.
- Some of the product illustrations contain optional accessories.
- Specifications and accessories are based on the information available at the time of printing and are subject to change without notice.
- Konica Minolta does not warrant that any prices or specifications mentioned will be error-free.
- Microsoft, Windows and the Windows logo are trademarks, or registered trademarks, of Microsoft Corporation in the United States and/or other countries.
- All other brand and product names may be registered trademarks or trademarks of their respective holders and are hereby acknowledged.
- Printed in Germany on chlorine-free bleached paper.

Your Konica Minolta Business Solutions Partner:



Konica Minolta
Business Solutions Europe GmbH
 Europaallee 17
 30855 Langenhagen • Germany
 Tel.: +49 (0) 511 74 04-0
 Fax: +49 (0) 511 74 10 50
 www.konicaminolta.eu